

QX2



- SMD/BGA



555-9

23 116

TEL:031-479-5890 FAX:031-479-5891

E-mail : bga@korea.com

www.bgakorea.com

1-1.

(DESOLDER)



1. PCB



2. PCB



3.



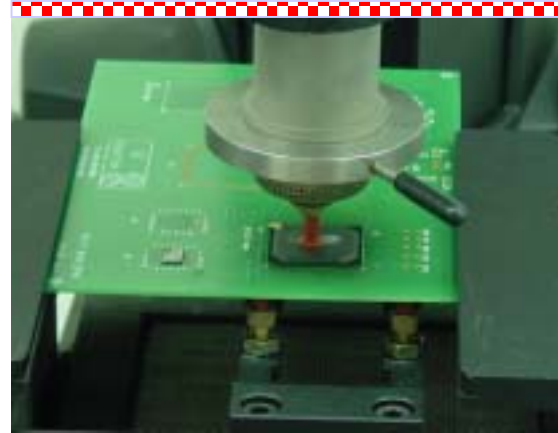
4. PCB
40mm

1-2.

(DESOLDER)

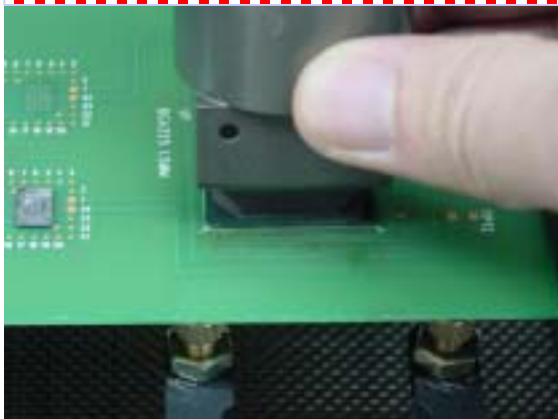


5. PCB



6

가



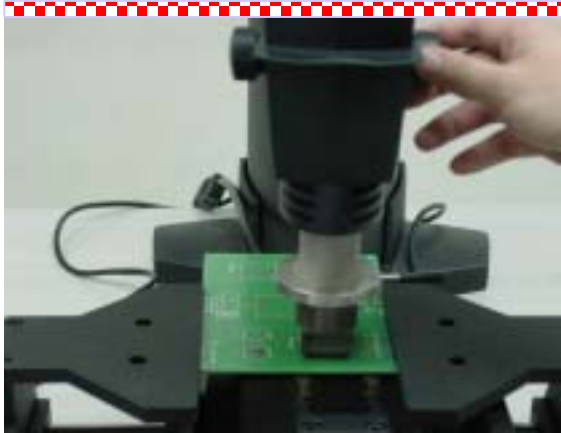
7



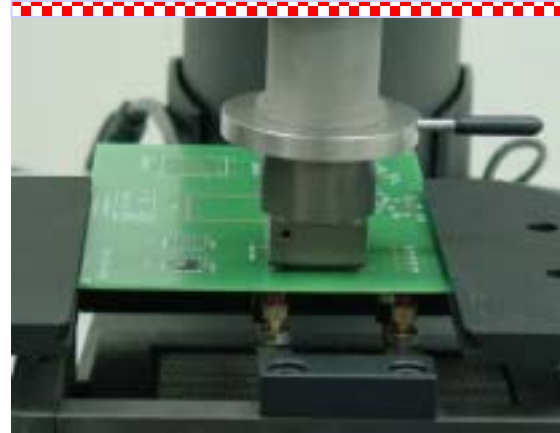
8

1 - 3.

(DESOLDER)



.9



mm

.10

2
~
3
PCB



.11



.12

1 - 4.

(DESOLDER)



9



10



가 11

가



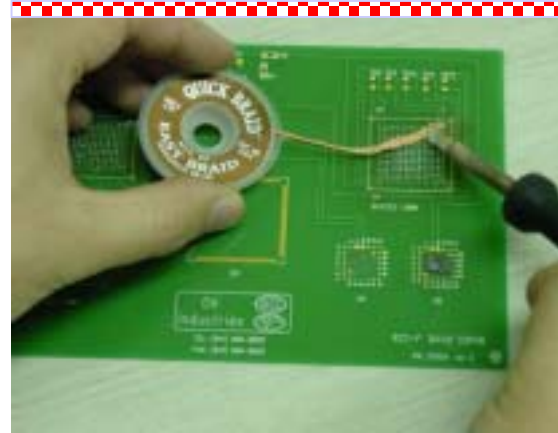
12

1 - 5.

(DESOLDER)



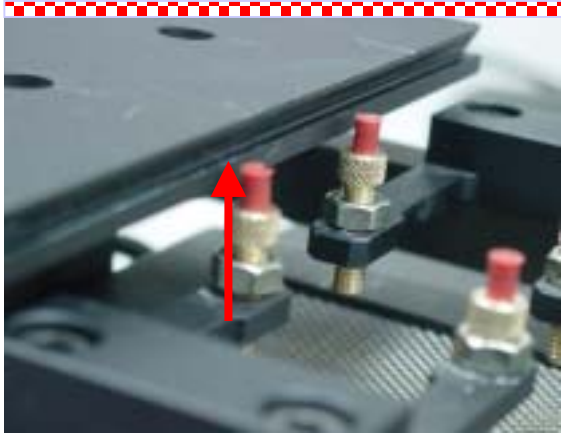
.9



PCB
10

2-1.

(SOLDER)



1. PCB



2. PCB

BGA



3.



4.

PCB

2-2.

(SOLDER)



5.



6.

PCB
mm ()



7.



8.

2-3.

(SOLDER)



10

.9



10

PCB

BGA Rework System

3-1.



1.



2.



“0000”
 +/-

3.



가

4. Cycles: System
 Remove Attach cycles

3-2.



5. Hours:



6. Mode
 + C
 - F



7. heater
 Air
 350°C



8. "INT"가
 "AUX"



가 "INT"

3 - 3.



9.

+/-



10.

Calibration mode



11.

Start/Stop

+

“Y”

-



12.

가